



# MONTHLY MEMBERSHIP PROGRESS REPORT

Results as of: 5/31/2015

Multiple District 23

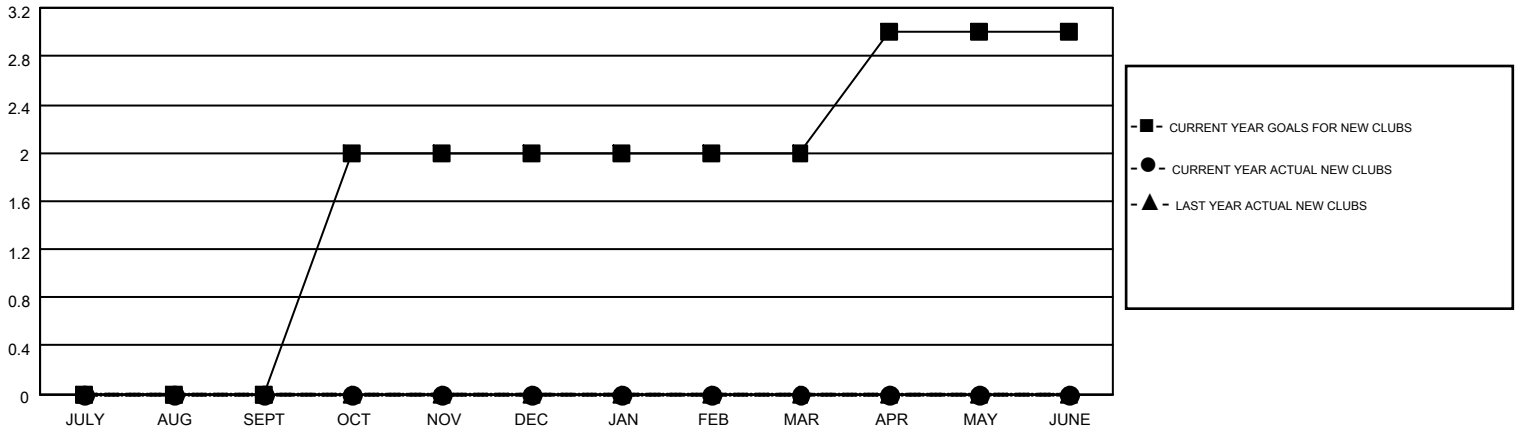
LOCATION: CONNECTICUT

GMT: ED LECIUS

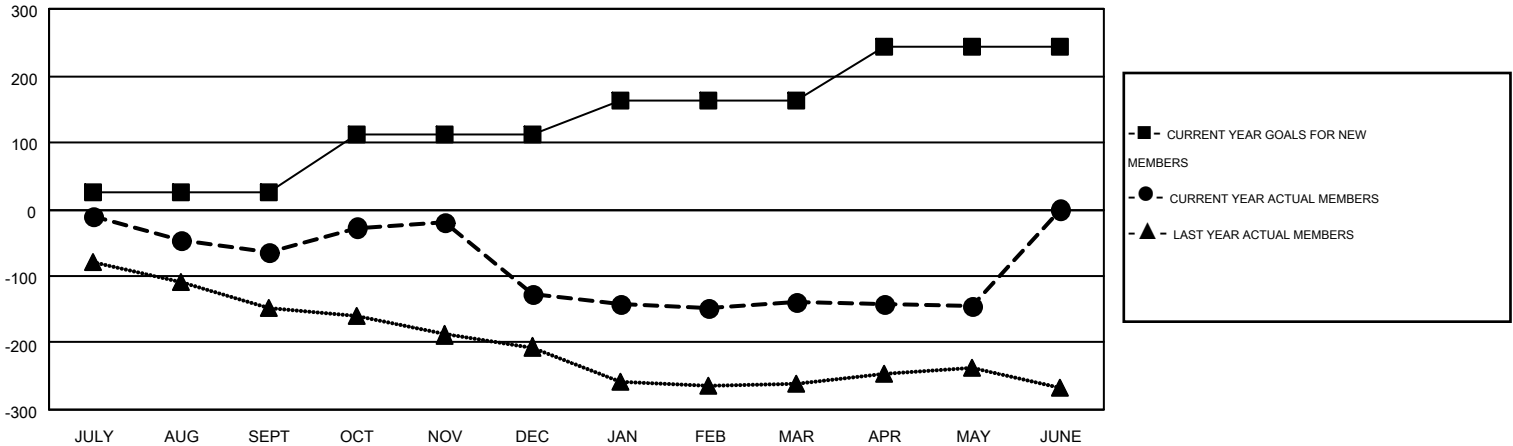
GMT CA 1

Clubs					Members				
RESULTS FOR 2014-2015					RESULTS FOR 2014-2015				
QUARTER	NEW CLUB GOAL	NEW CLUBS	DROPPED CLUBS	NET GAIN/LOSS	QUARTER	NEW MEMBER GOAL	CHARTER AND NEW MEMBERS ADDED	DROPPED MEMBERS	NET GAIN/LOSS
JULY/AUG/SEPT	0	0	0	0	JULY/AUG/SEPT	25	80	143	-63
OCT/NOV/DEC	2	0	2	-2	OCT/NOV/DEC	88	137	202	-65
JAN/FEB/MAR	0	0	0	0	JAN/FEB/MAR	51	91	102	-11
APR/MAY/JUNE	1	0	0	0	APR/MAY/JUNE	80	70	76	-6

GOALS AND ACTUAL NEW CLUBS CUMULATIVE



GOALS AND ACTUAL MEMBERS CUMULATIVE



DROPPED CLUBS: 2	109 CLUBS OF 154 ADDED 1 OR MORE NEW MEMBERS	<b>GENDER DISTRIBUTION</b>
		MALE 3,482 (68.77%)
		FEMALE 1,581 (31.23%)
<b>DROPPED MEMBERS</b>	<a href="#">CLICK HERE FOR HEALTH ASSESSMENT DATA</a>	<b>FAMILY UNIT MEMBERS</b> 790
DECEASED 60		HEAD OF HOUSEHOLD 383
CLUB CANCELLED 9		NON-HEAD OF HOUSEHOLD 407
OTHER 454		
<b>TOTAL 523</b>		